



GENERAL PLAN

LAND USE MAP

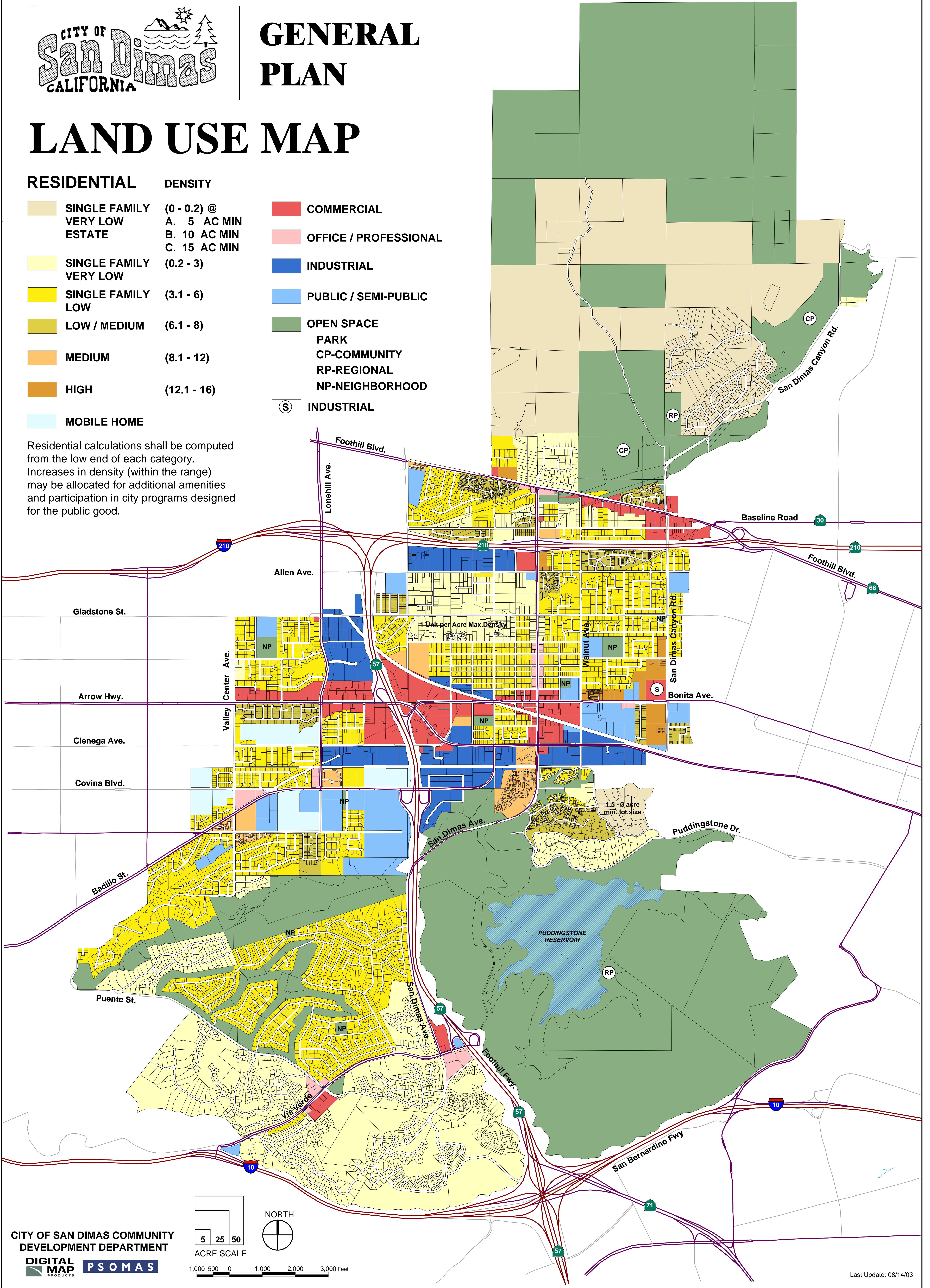
RESIDENTIAL

DENSITY

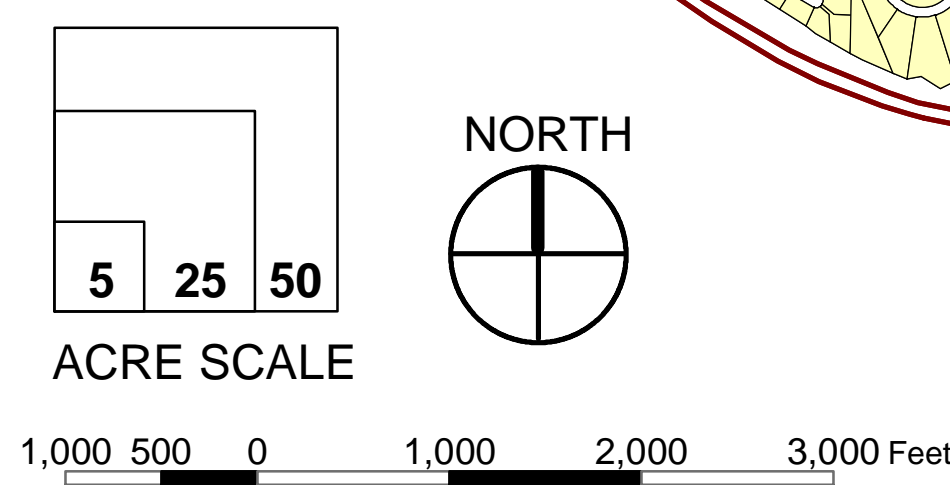
- SINGLE FAMILY VERY LOW ESTATE (0 - 0.2) @
A. 5 AC MIN
B. 10 AC MIN
C. 15 AC MIN
- SINGLE FAMILY VERY LOW (0.2 - 3)
- SINGLE FAMILY LOW (3.1 - 6)
- LOW / MEDIUM (6.1 - 8)
- MEDIUM (8.1 - 12)
- HIGH (12.1 - 16)
- MOBILE HOME

- COMMERCIAL
- OFFICE / PROFESSIONAL
- INDUSTRIAL
- PUBLIC / SEMI-PUBLIC
- OPEN SPACE
PARK
CP-COMMUNITY
RP-REGIONAL
NP-NEIGHBORHOOD
- INDUSTRIAL

Residential calculations shall be computed from the low end of each category. Increases in density (within the range) may be allocated for additional amenities and participation in city programs designed for the public good.



CITY OF SAN DIMAS COMMUNITY DEVELOPMENT DEPARTMENT
DIGITAL MAP PRODUCTS **PSOMAS**



Last Update: 08/14/03